

## ENGINE DRAIN LINES - MAINTENANCE PRACTICES (PT6A-114/PT6A-114A)

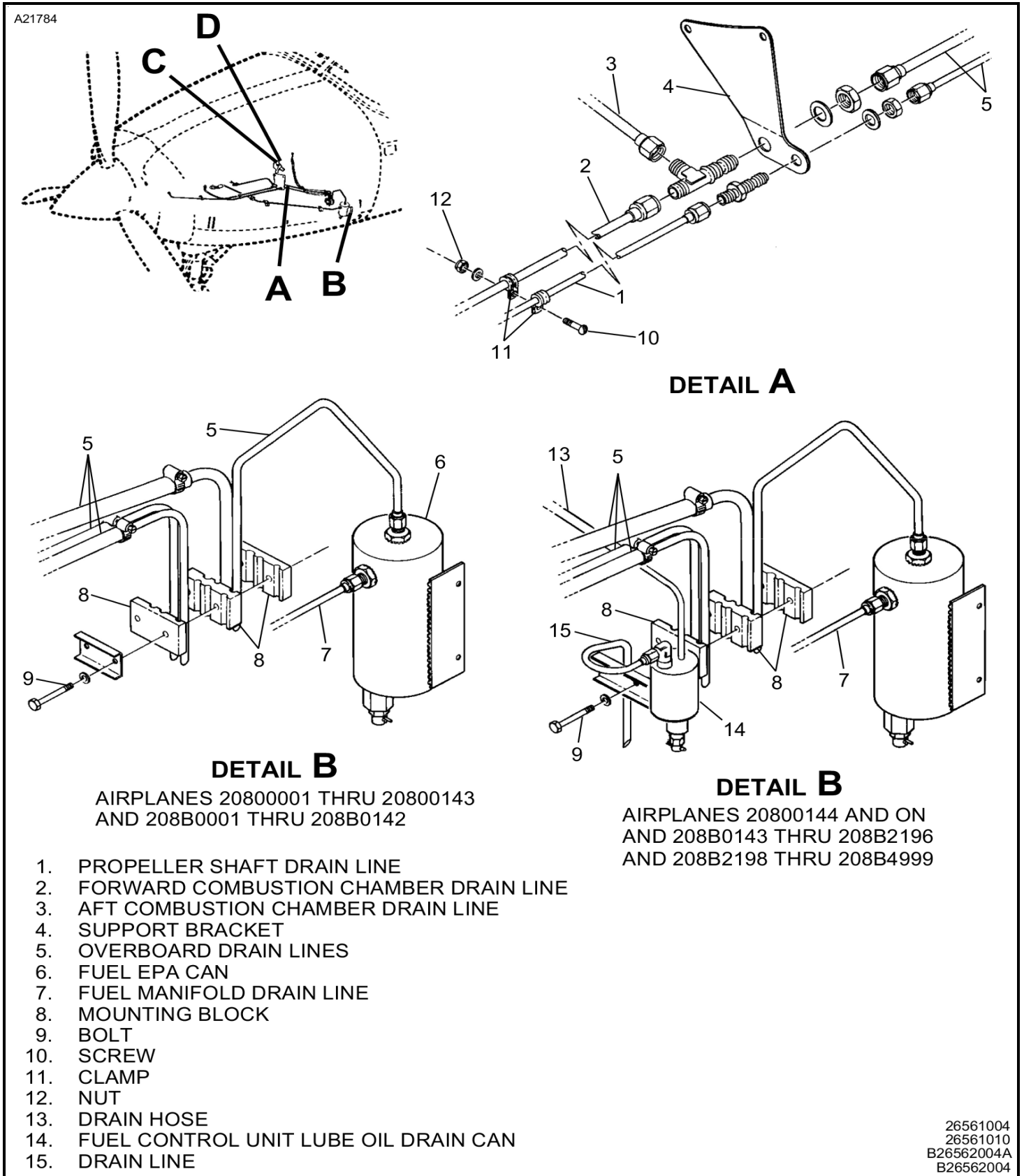
### 1. General

- A. A series of drain lines is installed to vent fluids overboard or to catch and retain for later disposal. Drains provided are: propeller shaft (1), forward (2) and aft (3) combustion chamber, fuel manifold (7), fuel control (14), EPA can (6), oil collection can and drain valves.

### 2. Engine Drain Lines Removal/Installation

- A. Due to the simplicity of the engine drains installation, refer to Figure 201 for a guide to removal and installation.

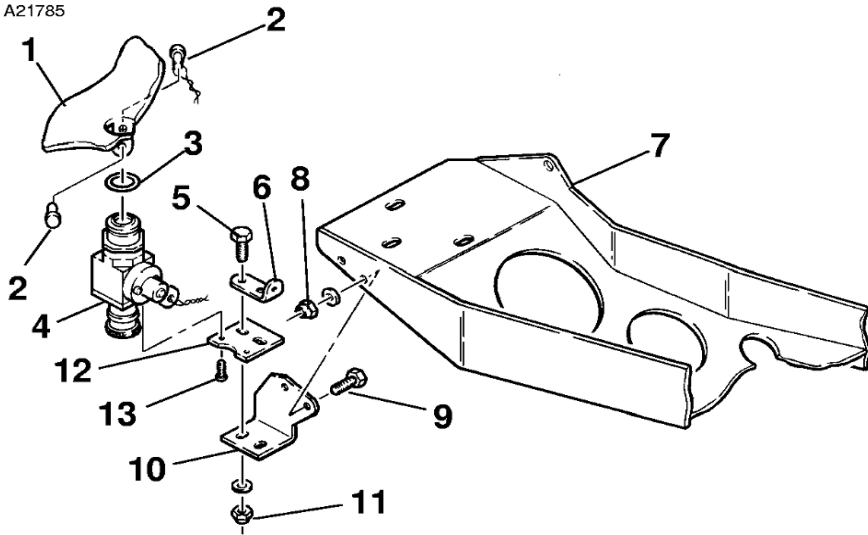
Figure 201 : Sheet 1 : Engine Drains Installation



26561004  
26561010  
B26562004A  
B26562004

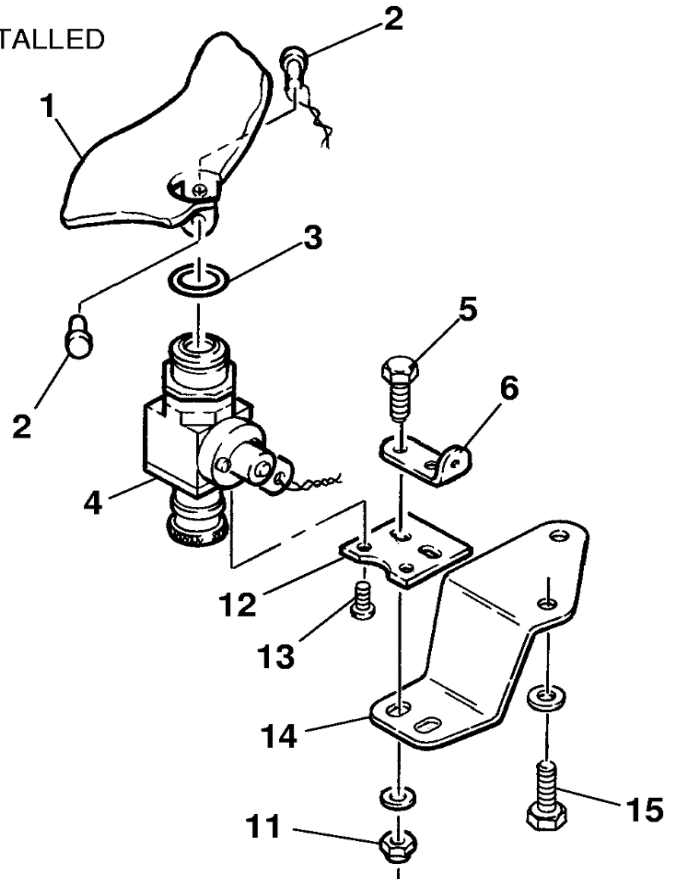
Figure 201 : Sheet 2 : Engine Drains Installation

A21785



**DETAIL C**

USED WHEN STANDBY ALTERNATOR IS INSTALLED



- 1. ENGINE OIL TANK SUMP
- 2. PIN
- 3. PACKING
- 4. DRAIN VALVE
- 5. BOLT
- 6. SAFETY-WIRE BRACKET
- 7. MOUNTING BRACKET ASSEMBLY
- 8. NUT
- 9. BOLT
- 10. BRACKET
- 11. NUT
- 12. BRACKET
- 13. SCREW
- 14. MOUNTING BRACKET
- 15. BOLT

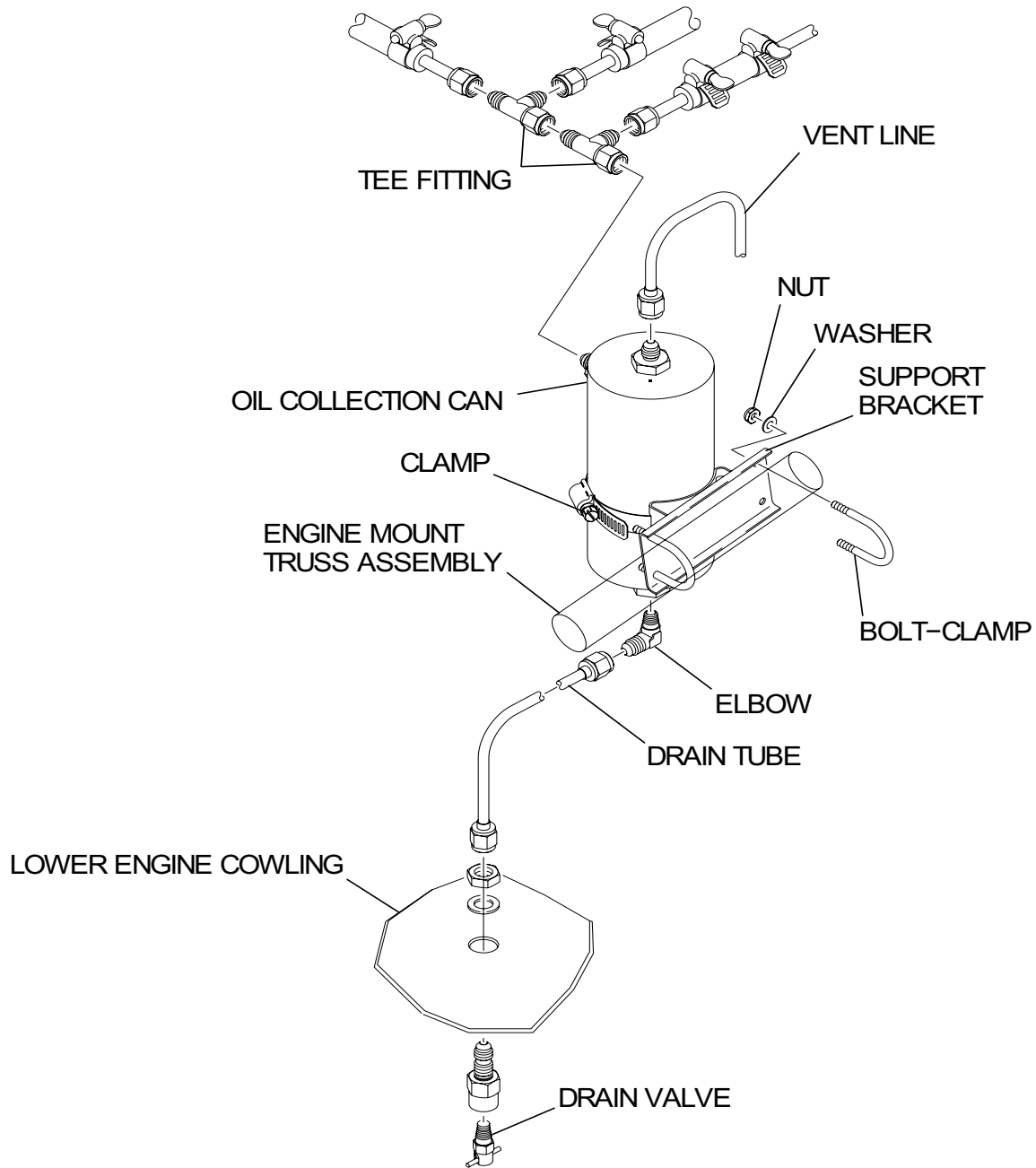
**DETAIL C**

USED WHEN STANDBY ALTERNATOR IS NOT INSTALLED

C26562002  
C26561025

Figure 201 : Sheet 3 : Engine Drains Installation

A21779



### DETAIL D

AIRPLANES 20800242 AND ON AND 208B0435  
AND ON, AND AIRPLANES 20800001 THRU  
20800241 AND 208B0001 THRU 208B0434  
INCORPORATING SK208-122

D2656T1026